



# DATA SHEET

Premium connector for waveguides

Kabelwerk | **EUPEN** AG

Rev.: 02/2011-09-21

cable

## EU 127 Elliptical Waveguide

### CONNECTOR

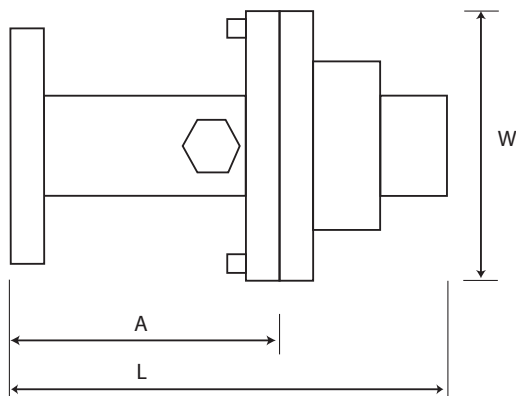


#### Electrical characteristics

- **Frequency range** GHz 11.7 - 13.25
- **VSWR** (gated measurement) < 1.05

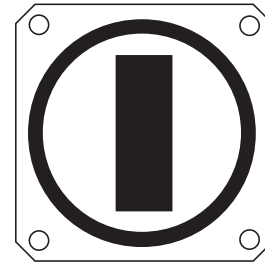
#### Mechanical characteristics

- **Total length "L"** mm (in) 96 (3.78)
- **Length of transformer section "A"** mm (in) 53 (2.09)
- **Largest dim. across "W"** mm (in) 68 (2.68)
- **Weight** kg (lb) 0.41 (0.90)



- **Max pressure** Bar (psi) 1.25 (18.1)
- **Gas port** P 1/8"
- **Temperature range** °F (°C) -40 / +176 (-40/ +80)
- **Connector material** brass

### FLANGE TYPE



**PBR 120**  
**WR 75 (CPR75-G)**  
(pressurable  
cover flange)

### TOOL

*Light-weight handheld flaring tool with saw guide*



#### Part numbers

<b>Connector</b>	<b>EU127-P-CPR75-G</b>
	<b>EU127-P-PBR120</b>
<b>Flaring Tool</b>	<b>EU-FT127-P</b>
<b>Saw guide</b>	<b>EU-SG127</b>
<b>Shim* for PBR flange</b>	<b>EU-SH127</b>
<b>Full thickness gasket** for CPR flange</b>	<b>EU-FGK127</b>
<b>Half thickness gasket** for CPR flange</b>	<b>EU-HGK127</b>

\* Use shim when mating two PBR flanges. Not required when mating PBR/UBR. Order separately.

\*\* Use full-thickness gasket (supplied with connector) when mating two CPR-G flanges. Use half-thickness gasket (order separately) when mating CPR-G with CPR-F.