



PRODUCT DESCRIPTION

Passive Components

Kabelwerk **EUPEN** AG

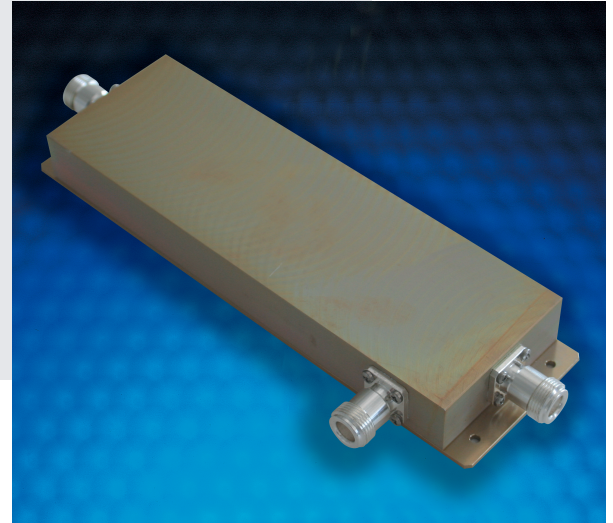
Rev.: 00/2005-08-19

cable

VHF/UHF Directional Couplers

FEATURES and BENEFITS

- *High directivity*
- *Good VSWR*
- *High power*
- *Broadband 70 MHz to 2.2 GHz or narrowband*



PRODUCT DESCRIPTION

A wide range of directional or transmitter couplers is available - from miniature low power to broadband high power versions.

Directional couplers are available to sample power/frequency at a pre-set coupling level with a sampling/coupling range 6 dB to 30 dB. Single or dual outputs can be provided.

The Eupen broadband transmitter coupler design allows operation across the range from 70 MHz to 2.2 GHz, making it particularly suitable for use in the distribution of multiple operators into buildings and tunnels.

All units can be manufactured to IP65 standard.

APPLICATIONS

- Radiating Cable Networks
- Combiner Systems
- Testing
- Distributed Antenna Systems